

1. Initiation  
(6-7<sup>th</sup> week)



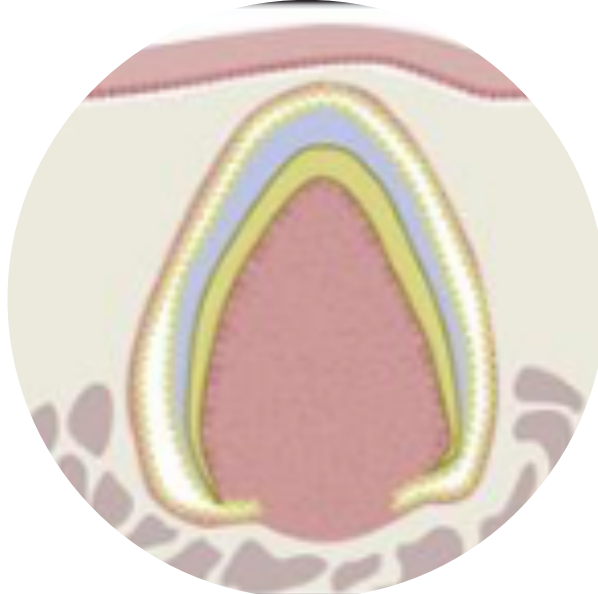
2. Bud Stage  
(8<sup>th</sup> week)



3. Cap Stage  
(9<sup>th</sup> - 10<sup>th</sup> week)



4. Bell Stage  
(11<sup>th</sup> – 12<sup>th</sup> week)



5. Apposition Stage  
(Varies Per Tooth)



6. Maturation Stage  
(Varies Per Tooth)